



# NOKOV

## Motion Capture System

Applications in Biomechanics

# Biomechanical Analysis System

## MULTIPLE CONNECTION MODES

- Analog signal connection mode
- Digital signal connection mode
- Synchronous trigger connection mode

## MULTIPLE OUTPUT FORMATS



## FORCE PLATE



## INSTRUMENTED TREADMILLS



## EMG



## EEG



## REFERENCE CAMERA



## EYE TRACKERS



## PLANTAR PRESSURE MEASUREMENT



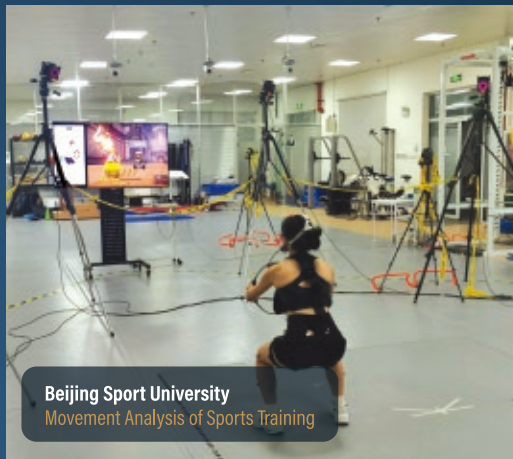
## SOFTWARE



## Case Studies



**Shanghai Yueyang Hospital**  
Human Body Movement



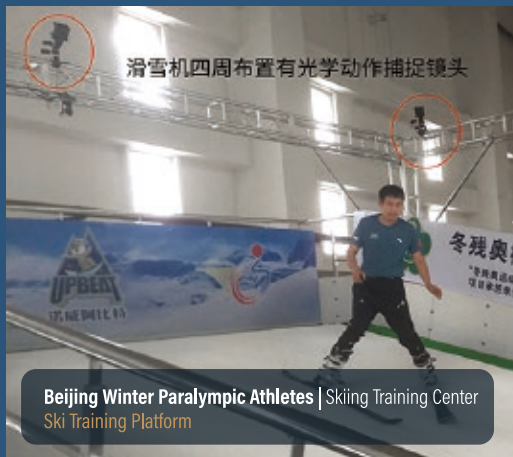
**Beijing Sport University**  
Movement Analysis of Sports Training



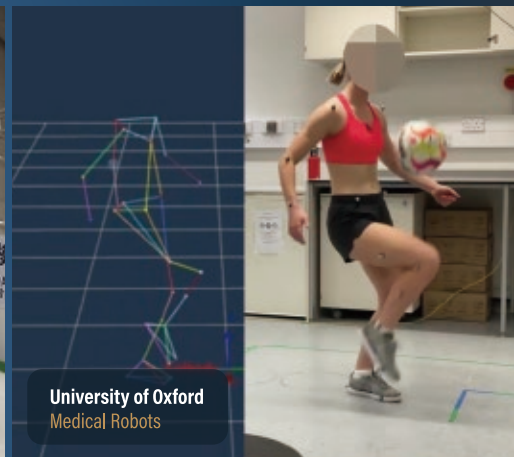
**Northeast Normal University**  
Movement Analysis of Sport Training



**South University of Science and Technology**  
Robotic Prosthesis



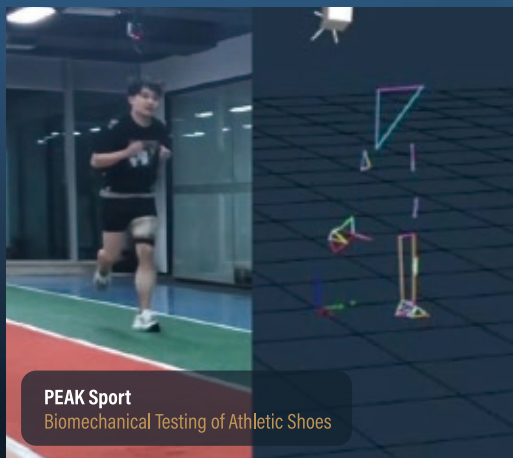
**Beijing Winter Paralympic Athletes | Skiing Training Center**  
Ski Training Platform



**University of Oxford**  
Medical Robots



**STT Systems**  
Gait Analysis / Running Analysis



**PEAK Sport**  
Biomechanical Testing of Athletic Shoes



**Beijing Jishuitan Hospital**  
Gait Analysis



**NOKOV motion capture system** encompasses low to high-end series, catering to diverse customer needs. Its rich SDK development package allows for easy integration into user applications, acquiring point, rigid body, and skeletal data. Stable supply chain management ensures timely delivery.



**Full Range** Motion Capture **Solutions**



**Versatile Applications** for Precise Motion Tracking



Extensive **Customization Support**



**Swift Shipping & Delivery** for Seamless Integration



**24/7** Uninterrupted Technical **Service**



## Specification



Model	P/N	Pixels	Frame Rate	Latency	3D Accuracy	Capture Distance	FOV
<b>MARS 1.3H</b>	Mars1.3H-INTL	1.3MP	240FPS	4.0ms	±0.2mm	11m*	56°×46°
	Mars1.3HW-INTL	1.3MP	240FPS	4.0ms	±0.3mm	9m*	95°×74°
<b>MARS 2H</b>	Mars2H	2.2MP	380FPS	2.4ms	±0.15mm	21m*	70°×40°
	Mars2HW	2.2MP	380FPS	2.4ms	±0.25mm	15m*	104°×55°
<b>MARS 4H</b>	Mars4H	4MP	180FPS	5.2ms	±0.1mm	32m*	52°×52°
	Mars4HW	4MP	180FPS	5.2ms	±0.25mm	20m*	90°×90°
<b>MARS 9H</b>	Mars9H	9MP	300FPS	3.0ms	±0.05mm	28m*	68°×37°
	Mars9HW	9MP	300FPS	3.0ms	±0.08mm	40m*	67°×52°
<b>MARS 14H</b>	Mars14H	14MP	670FPS	2.0ms	±0.05mm	27m*	68°×45°
<b>MARS 18H</b>	Mars18H	18MP	139FPS	2.3ms	±0.04mm	28m*	54°×49°
	Mars18HW	18MP	139FPS	2.3ms	±0.15mm	18m*	90°×82°
<b>MARS 26H</b>	Mars26H	26MP	150FPS	2.3ms	±0.03mm	30m*	56°×56°
	Mars26HW	26MP	150FPS	2.3ms	±0.1mm	20m*	105°×105°

\* Customized models are also available upon request. For more information, please contact [info@nokov.cn](mailto:info@nokov.cn)



BEIJING NOKOV SCIENCE & TECHNOLOGY CO., LTD



🌐 [www.nokov.com](http://www.nokov.com)    ✉ [info@nokov.cn](mailto:info@nokov.cn)    ☎ +86-10-64922321

📍 Beijing (Headquarter) Room 820, China Minmetals Tower, Chaoyang District, Beijing  
📍 Shanghai Subsidiary Room B201, Shangpinduhui, No.268 Tongxie Road, Changning District, Shanghai  
📍 WuHan Branch #B3-601, Wuda Airlines Phase 2, Donghu High-tech Economic Development, Wuhan, Hubei  
📍 Shenzhen Branch A2102, Cloud Technology Building, Nanshan District, Shenzhen